

Old Dan Tucker

Verse

Musical notation for the first line of the verse. It starts with a treble clef, a key signature of two sharps (F# and C#), and a 4/4 time signature. The melody consists of quarter notes: A4, B4, C5, B4, A4, G4, F#4, E4, D4, C4. Chords A, E7, and A are indicated above the staff.

Chorus

Musical notation for the first line of the chorus. It starts with a treble clef, a key signature of two sharps, and a 4/4 time signature. The melody consists of quarter notes: A4, B4, C5, B4, A4, G4, F#4, E4, D4, C4. Chords E7 and A are indicated above the staff.

Musical notation for the second line of the chorus. It continues the melody from the first line. Chords E7 and A are indicated above the staff.

Jawbone

Musical notation for the first line of 'Jawbone'. It starts with a treble clef, a key signature of two sharps, and a 4/4 time signature. The melody consists of quarter notes: A4, B4, C5, B4, A4, G4, F#4, E4, D4, C4. Chords A, E7, and A are indicated above the staff.

Musical notation for the second line of 'Jawbone'. It continues the melody from the first line. Chords E7 and A are indicated above the staff.

Musical notation for the third line of 'Jawbone'. It continues the melody from the second line. Chords E and A are indicated above the staff.

Musical notation for the fourth line of 'Jawbone'. It continues the melody from the third line. Chords E and A are indicated above the staff.

Capo 2

Banjo / Guitar Capo 2 Old Dan Tucker

Musical notation for the first system of 'Old Dan Tucker'. It consists of two staves. The first staff is labeled 'Banjo / Guitar' and 'Capo 2'. The key signature is one sharp (F#) and the time signature is 4/4. The melody starts with a G chord, followed by a D7 chord, and ends with a G chord. The notation includes eighth and quarter notes, with a repeat sign at the end of the first staff.

Capo 2 banjo jawbone

Musical notation for the second system of 'Jawbone'. It consists of two staves. The key signature is one sharp (F#) and the time signature is 4/4. The melody is written in a style typical for banjo or jawbone, with many beamed eighth notes. It starts with a G chord, followed by a D7 chord, and ends with a G chord. The notation includes a repeat sign at the end of the second staff.

D sync G

Musical notation for the third system, labeled 'D sync'. It consists of two staves. The key signature is one sharp (F#) and the time signature is 4/4. The melody is written in a syncopated style. It starts with a D chord, followed by a G chord, and ends with a G chord. The notation includes a repeat sign at the end of the second staff.

D sync G

Musical notation for the fourth system, also labeled 'D sync'. It consists of two staves. The key signature is one sharp (F#) and the time signature is 4/4. The melody is written in a syncopated style. It starts with a D chord, followed by a G chord, and ends with a G chord. The notation includes a repeat sign at the end of the second staff.

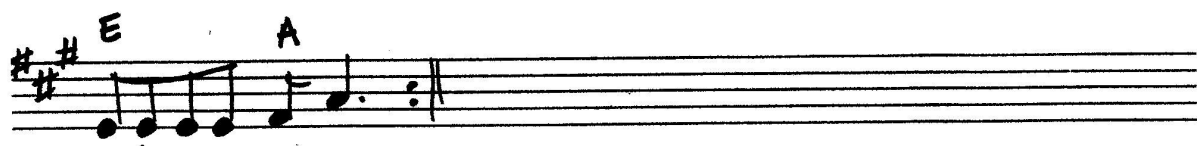
Cherokee Shuffle

Handwritten musical score for "Cherokee Shuffle" in A major, 4/4 time. The score consists of five staves. The first staff shows the key signature (two sharps) and the time signature (4/4), with a treble clef and a key signature of two sharps. The melody is written in eighth notes. Chords are indicated above the staff: A, F#m, A, and F#m. The second staff continues the melody with chords D, A, E7, and a first ending bracket over A and A. The third staff continues with chords D, A, D, and A. The fourth staff continues with chords D, A, and F#m. The fifth staff concludes with chords A, E7, and a second ending bracket over A and A.

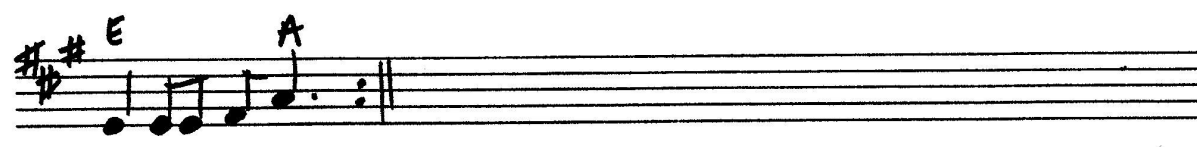
Gold Rush

Handwritten musical score for "Gold Rush" in A major, 4/4 time. The score consists of four staves. The first staff shows the key signature (two sharps) and the time signature (4/4), with a treble clef and a key signature of two sharps. The melody is written in eighth notes. Chords are indicated above the staff: A and E. The second staff continues the melody with chords E, A, and A. The third staff continues with chords D and A. The fourth staff concludes with chords D, A, E, and a first ending bracket over A and A.

SONG *Sally Gooden* ADOLFSOON



LEAD



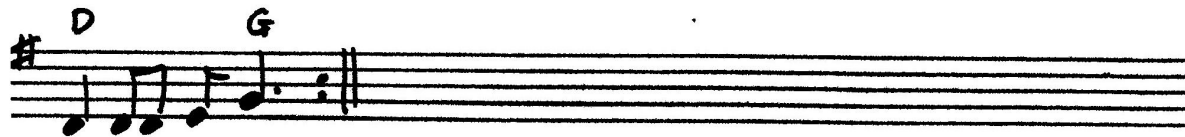
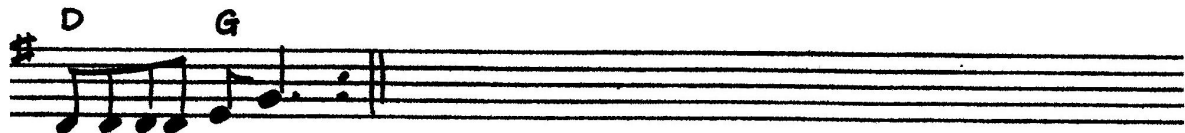
Salt Creek



Capo 2

Capo 2 banjo
SONG

Sally Gooden



Capo 2 banjo

Salt Creek

